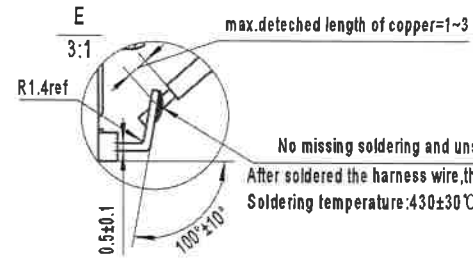
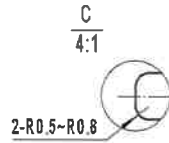
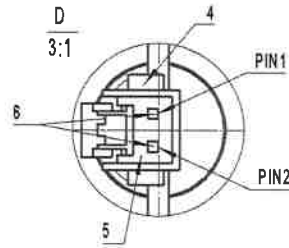


1.标记有“★”项目PpK>1.67,CPK>1.33

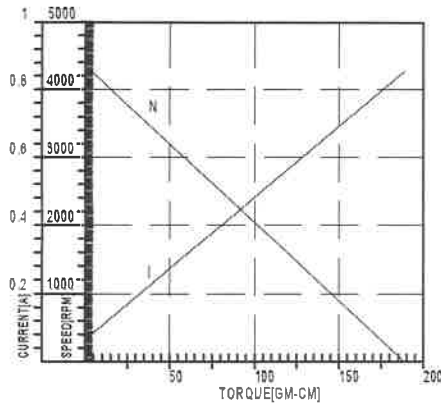
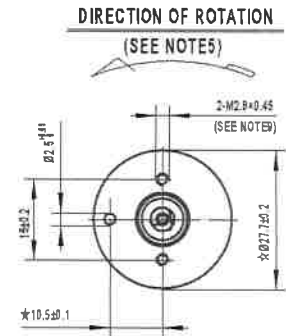
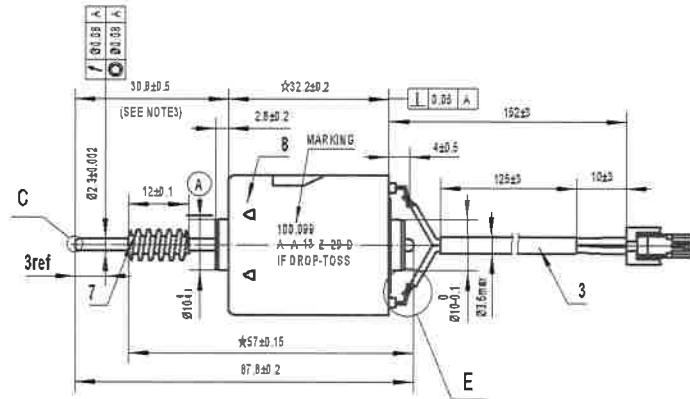
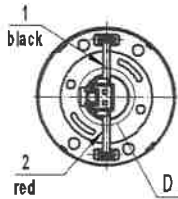
2.标记有“☆”项目每个模号须检测5PCS以上

NOTES:

- 1.THIS MOTOR IS WRS-365SH
- 2.TOLERANCES NOT OTHERWISE SPECIFIED DECIMAL:±0.3mm.
- 3.THIS DIMENSION APPLIES ONLY WHEN MOTOR SHAFT IS IN EXTREME RIGHT POSITION.
- 4.SHAFT END PLAY:0.1-0.4mm.
- 5.DIRECTION OF ROTATION:CCW WHEN VIEW FROM ENDCAP WITH POSITIVE VOLTAGE APPLIED TO POSITIVE TERMINAL.
- 6.RATED VOLTAGE:DC 12V,RATED LOAD 8.5mNm(fan).
- 7.INSULATING RESISTANCE:DC 500V 10MΩ Min.
- 8.DIELECTRIC STRENGTH :AC 800V 2sec≤1mA.
- 9.USABLE MACHINE SCREW LENGTH 4.0 MAX(MEASURED WITH A FORCE AXIALY ON THE MOTOR SHAFT OF 10N IN BOTH DIRECTION)FROM MOTOR MOUNTING SPACE.
- 10.WORM MOTOR ASSEMBLY FORCE :30kgf MIN AND 130 kgf MAX,WORM SLIP TORQUE:16kgcm MIN,REMOVAL FORCE:15kgf min.
- 11.FUNCTION-RELEVANT CHARACTERISTICS:◇
- 12.DIMENSION OF THE MOTOR SHAFT 30.6±0.5mm,MEASURED WITH A FORCE OF 1N AXIALY TO THE MOTOR AXIS.
- 13.PLUG-IN TERMINAL IS ABLE TO STAND A PULL-OFF FORCE OF 30N MIN.
- 14.DIMENSION MARKED WITH "ref"ARE ONLY FOR INFORMATION.



No missing soldering and unsufficient soldering, No wire broken
After soldered the harness wire, the pull off force for harness to 20N min.
Soldering temperature:430±30°C.



CIRCUIT:



MARKING:
HEIGHT OF WORD :2mm(REF)



CHARACTERISTICS TEST DATA

	NO LOAD CURRENT ★(A)	NO LOAD SPEED ★(r/min)	RATED LOAD CURRENT ★(A)	RATED LOAD SPEED ◇(r/min)	STALL TORQUE ★(mN.m)
MOTOR LEVEL	≤0.08	4300±10%	≤0.450	2320±10%	≥17

DETAILS OF THE SPIRAL:

normal module	0.653
number of teeth	1
pressure angle	10°
helix angle	82.6388°
root diameter	∅3.53 _{-0.11}
tip diameter	∅6 _{-0.11}
profile modification factor	(-1.63)
head rounding radius	0.1 _{-0.15}
feed rounding radius	0.35
length of toothing	min.10.5
tangential force	3.9
axial force	19.4
dimension over balls	7.26 _{-0.103}
pin/ball diameter	1.5

pos.	short designation	number	material	pos.4
8	WRS-365SH-13183A	1		
7	WORM	1	CuZn39Pb3	
6	SLOW-MOTION-CONTACT	2	SPAH-A011-K050(inside connector)	
5	2 POLE CONNECTOR	1	PARP-02V(white)	
4	RETAINER FOR 2 POLE CONNECTOR	1	PMS-02V-5(ivory)	
3	HEAT SHRINKABLE TUBE	1	-40℃bis/to +90℃(3000h)	
2	LEAD WIRE(RED)	1	FLRY-B 0.35 -40℃bis/to +105℃(3000h)	PIN2(+)
1	LEAD WIRE(BLACK)	1	FLRY-B 0.35 -40℃bis/to +105℃(3000h)	PIN1(-)

未注公差标准		直线		角度	
尺寸(mm)	类别±	Dimension of A	类别±	B	标记
≤6	0.1	A B C D E F G H I J K L M N P Q R S T U V W X Y Z	3°	B	标记
6+~30	0.2				
30+~120	0.3	10+~50	2°		
120+~400	0.5	50+~120	1°		
90以上	0.8	120以上	30'		

WRS-365SH

物料编码 1.C.R.365SH-307

图纸编号 W-027WXB

重量 61±2g

比例 1:1

版本号 A

Project No.:

Outline DWG