



JOHNSON ELECTRIC INDUSTRIAL MANUFACTORY LIMITED

JOHNSON BUILDING-14-16 LEE CHUNG STREET-CHAIWAN-HONGKONG-TEL:5-568211-9-TELEX:73777 JEIHK HX-CABLE:JOHNSELEC

德昌電機工業製造廠有限公司 香港柴灣利眾街十四號德昌工業大廈

COMPUTER PRINT-OUT

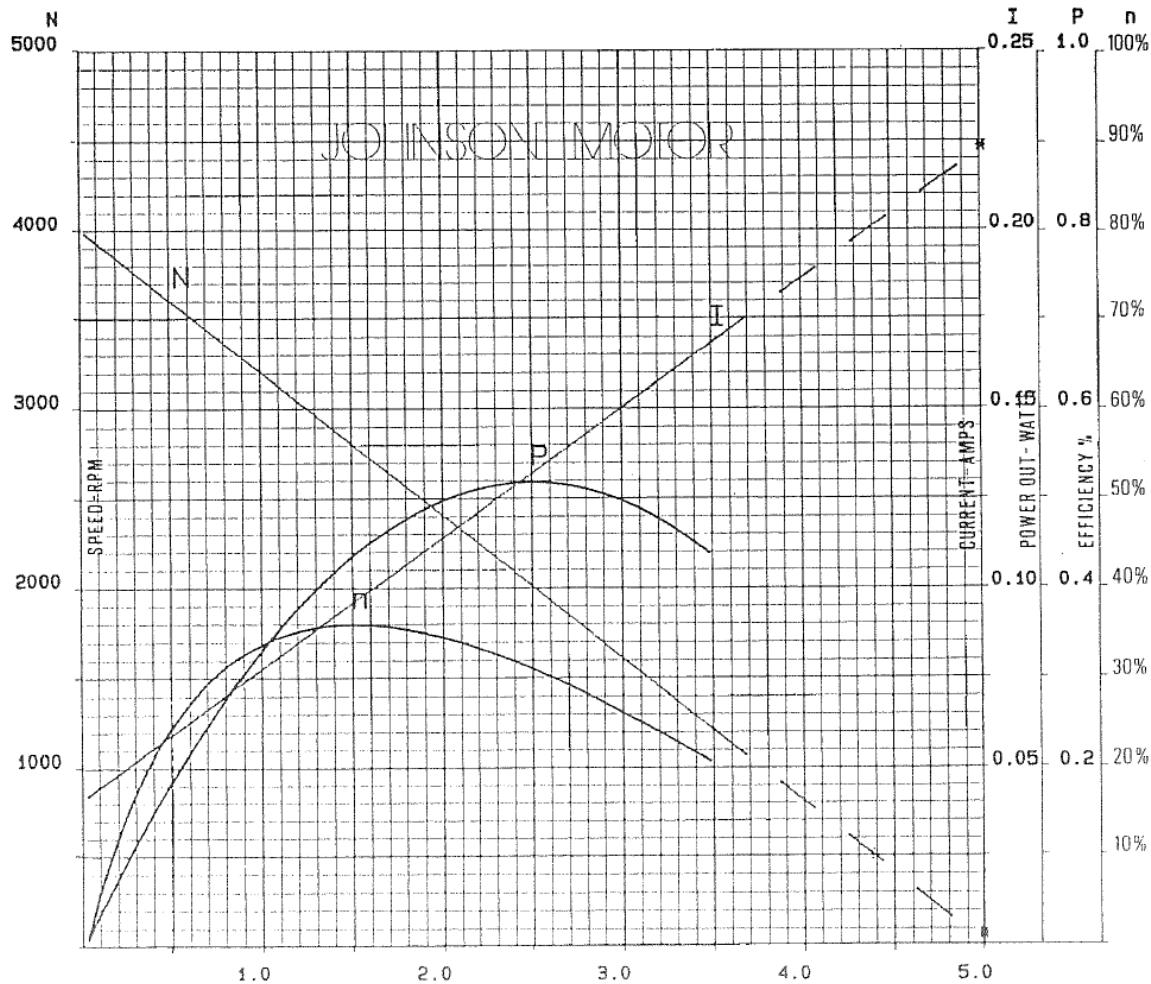
NOMINAL MOTOR CURVES, PERFORMANCE AND CHARACTERISTICS

SOF NUMBER :

MOTOR CODE NUMBER: HC350F-3625

TEST REFERENCE NUMBER:

DATE: 14-5-91



PERFORMANCE

AT A MOTOR TERMINAL VOLTAGE OF : 13 VOLTS.
IN AN AMBIENT TEMPERATURE OF : 25 DEGS. CENT.

MOTOR TESTED RAPIDLY TO PREVENT SIGNIFICANT TEMPERATURE RISE.

AT NO LOAD

SPEED = 3938 R.P.M.
CURRENT = 0.040 AMPS.

AT STALL (EXTRAPOLATED).

TORQUE = 4.95 M.N.M.
CURRENT = 0.22 AMPS.

AT MAXIMUM EFFICIENCY

EFFICIENCY = 35.1%
SPEED = 2761 R.P.M.
TORQUE = 1.48 M.N.M.
CURRENT = 0.09 AMPS.

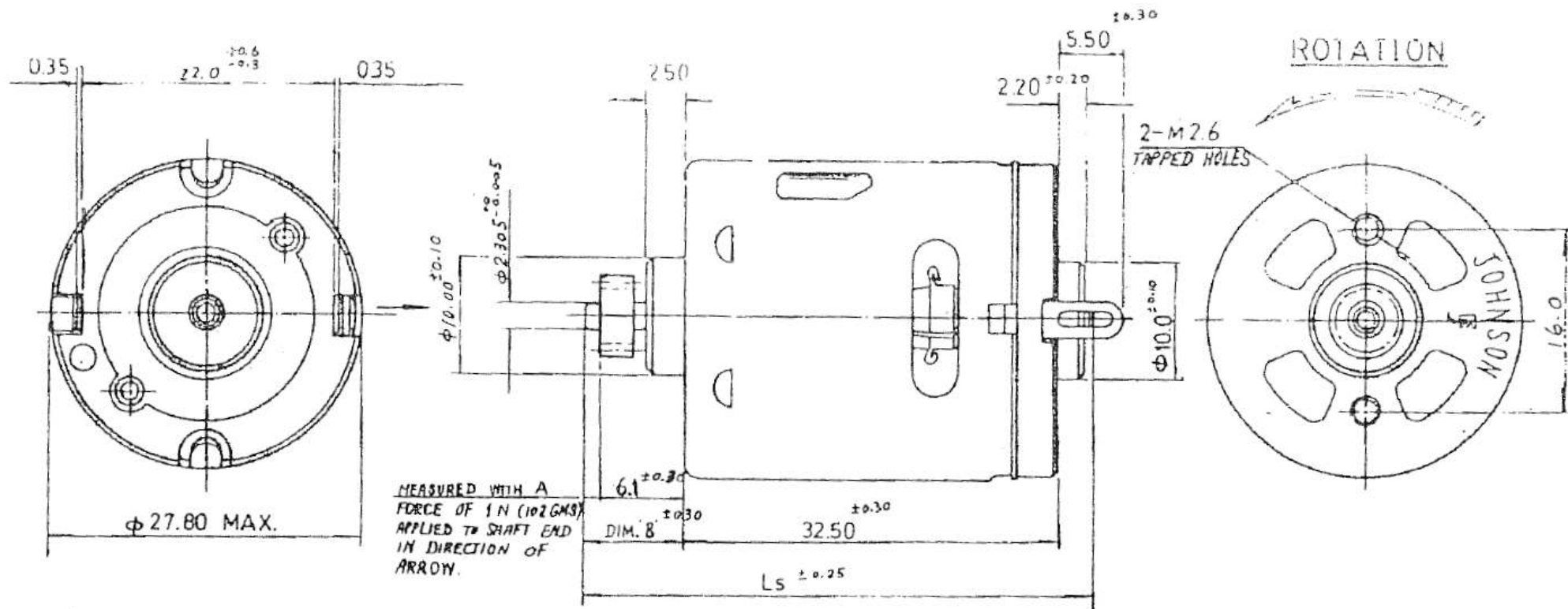
AT MAXIMUM POWER OUTPUT.

SPEED = 1969 R.P.M.
TORQUE = 2.47 M.N.M.
CURRENT = 0.13 AMPS.
OUTPUT = 0.51 WATTS

CHARACTERISTICS

TORQUE CONSTANT = 27.480 M.N.M./AMP.
E.M.F. CONSTANT = 27.480 MV/RAD/SEC.
DYNAMIC RESISTANCE = 59.094 OHMS.
MOTOR REGULATION = 796.190 RPM./M.N.M.

MOMENT OF INERTIA = no data KG. M.M.
ELECT/MECH. TIME CONSTANT = no data SECS.



5. PINION TO BE WITHSTAND A PULL-OFF FORCE OF MIN. 50 N (APPROX. 5.1 KG) WITHOUT MOVEMENT.

NOTES :

1. LENGTH OF SHAFT, DIM: 'A' 43.0 MM.
2. FRONT EXTENSION, DIM: 'D' 8.3 MM., MEASURED WITH SHAFT PUSHED AGAINST PLASTIC END CAP.
3. DIRECTION OF ROTATION: ANTI-CLOCKWISE WHEN VIEWING MOTOR OUTPUT END WITH POSITIVE VOLTAGE APPLIED TO POSITIVE TERMINAL.
4. END PLAY: 0.5 MM. MAX.

IF IN DOUBT, PLEASE ASK

TOLEANCES UNLERS OTHERWISE SPECIFIED
MILLIMBTRE $\pm .15$ ANGLE $\pm 1/20$