

# **USER'S MANUAL**

## **3.5 INCH USB 2.0 HDD ENCLOSURE**



<u>Index</u>	<u>Page</u>
Features and Specification.....	2
Requirements.....	2
Package contents.....	2
Hardware Installation.....	3
Software Installation.....	9



## Features and Specification :

1. Interface standard : USB2.0
2. USB connectors/cable: One USB B type connector and One USB A TO B Cable.
3. Data transfer rate: High Speed up to 480Mbps.
4. Ideal for backup, storage Data files.
5. Truly Plug and Play automatic system configuration.
6. Windows device drivers automatic installation.

## Requirements :

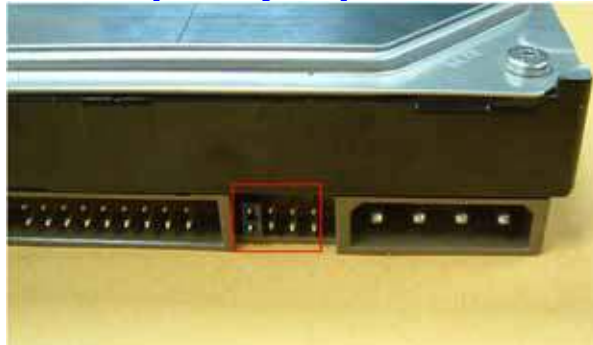
1. IBM or Compatible PC / Apple iMac.G4
2. USB 2.0 Host or USB 2.0 HUB .
3. Windows 2000, Windows XP, Windows ME or Windows 98SE operating system /Mac OS 10.X.

## Packing contents :

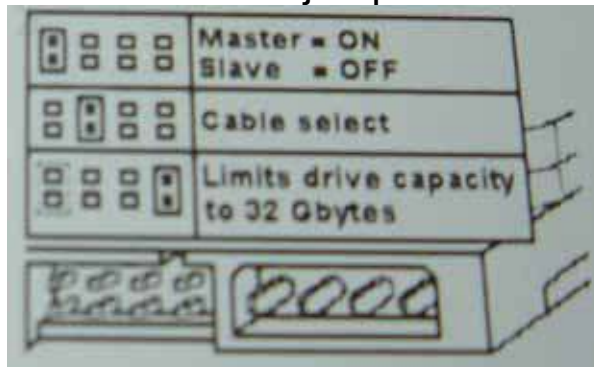
Item
3.5 Inch HDD Enclosure
USB A to B Cable
Screws
Power Adaptor DC12V
CD Driver (With User's Manual)

# Hardware Installation :

**Notice:**First,please set up the jump for Master type in your HDD.



3.5 HARD DRIVE jumper select view



3.5 HARD DRIVE jumper select view

1. Open the hard disk enclosure.



2. Connect hard disk as below.



3. Screw up HARD DRIVER as below.



4. Assemble the HDD enclosure.



5. Screw up the enclosure as below.





6. Please follow the step connect to the PC



## Troubleshooting

1. If the HDD Enclosure to shake, please add the stick on the back cover as below.



2. If you cannot find the icon, please plug USB cable again
3. Suggest use the FAT32 format system type when you use WIN98SE or WINME
4. All devices must select and jump to Master Mode

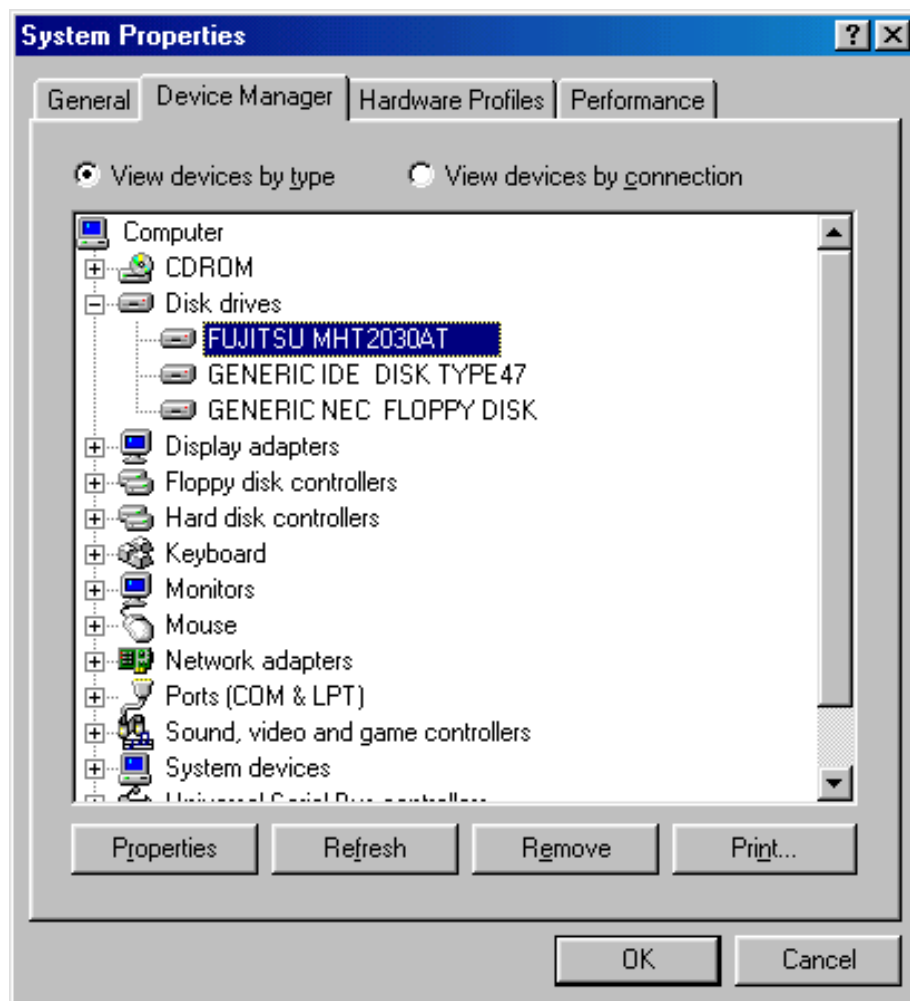
# Software Installation :

## Supported OS

Windows XP, Windows 2000, Windows ME, Windows 98SE (You don't need to install driver under Win2000 or above) . The drivers supplied with this distribution are for Win98SE only. Please turn on your computer and plug-in your HDD box, windows will auto detect and appear an new icon.

## \*Windows 98SE driver Installation:

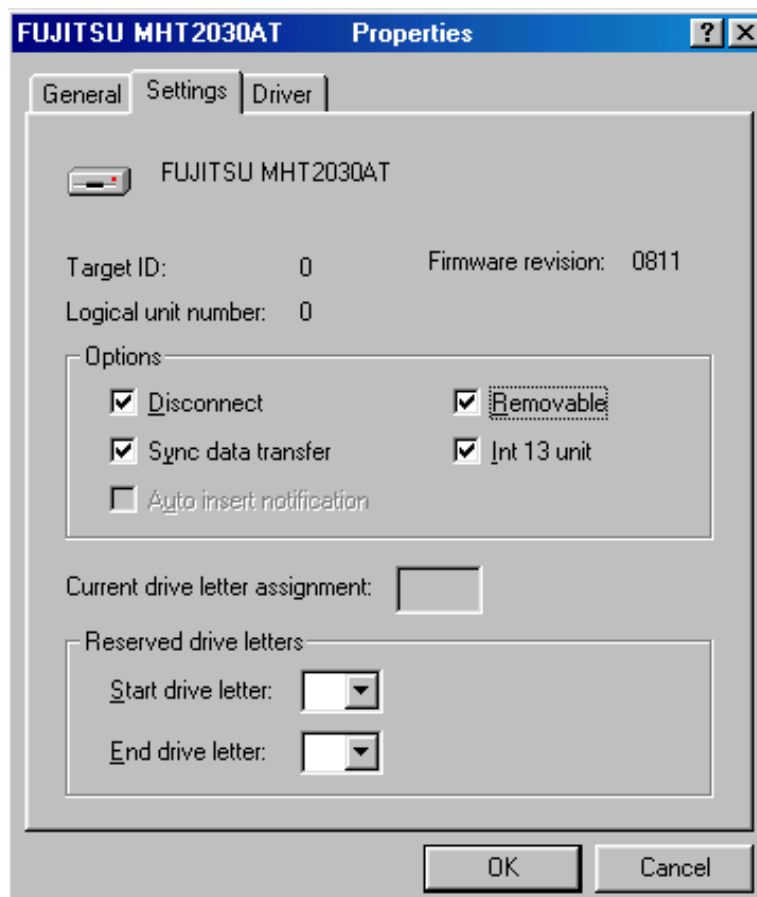
1. Please insert CD into the CD-ROM
5. Double click "Setup.exe".
3. Follow the step
4. Please re-start your PC and plug in your HDD BOX .
5. Please select your brand of HARD DRIVE that is in the enclosure, click it.  
"Device Manager " in "System Properties" as below.



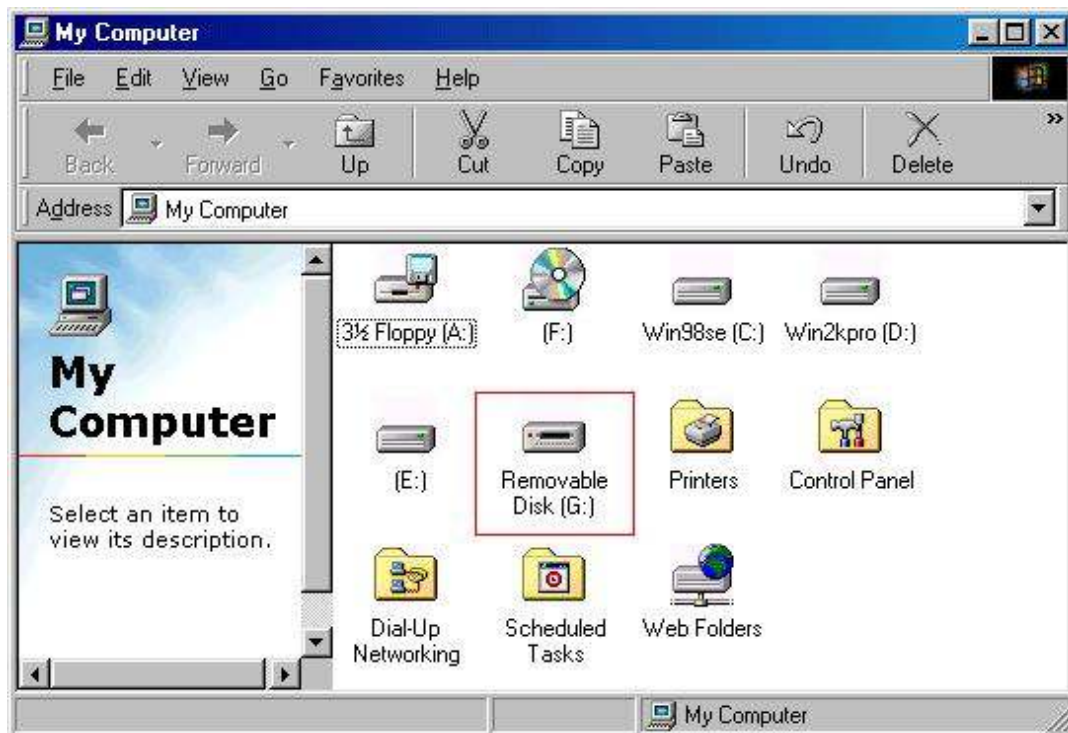
6. Please click “Setting” as below.



7. Please click “Removable” type and click “OK”.

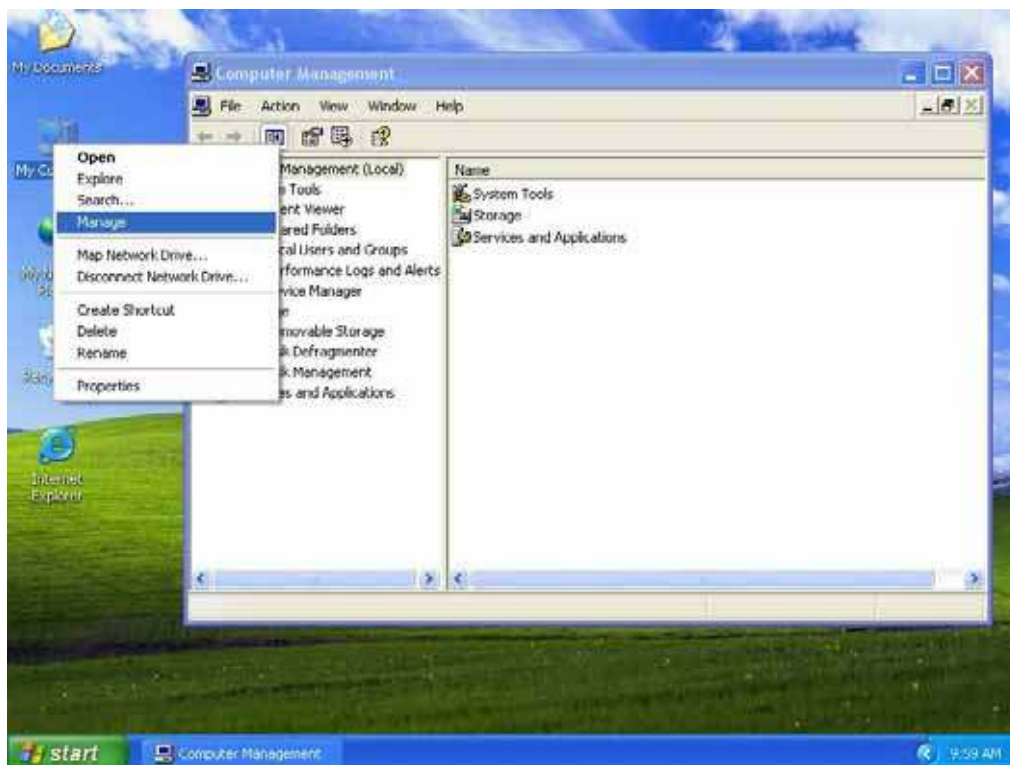


8. Now in “My computer”,the “Removable Disk” will appear,  
Please format the HARD DRIVE, if your HDD is a all new hard drive before using.

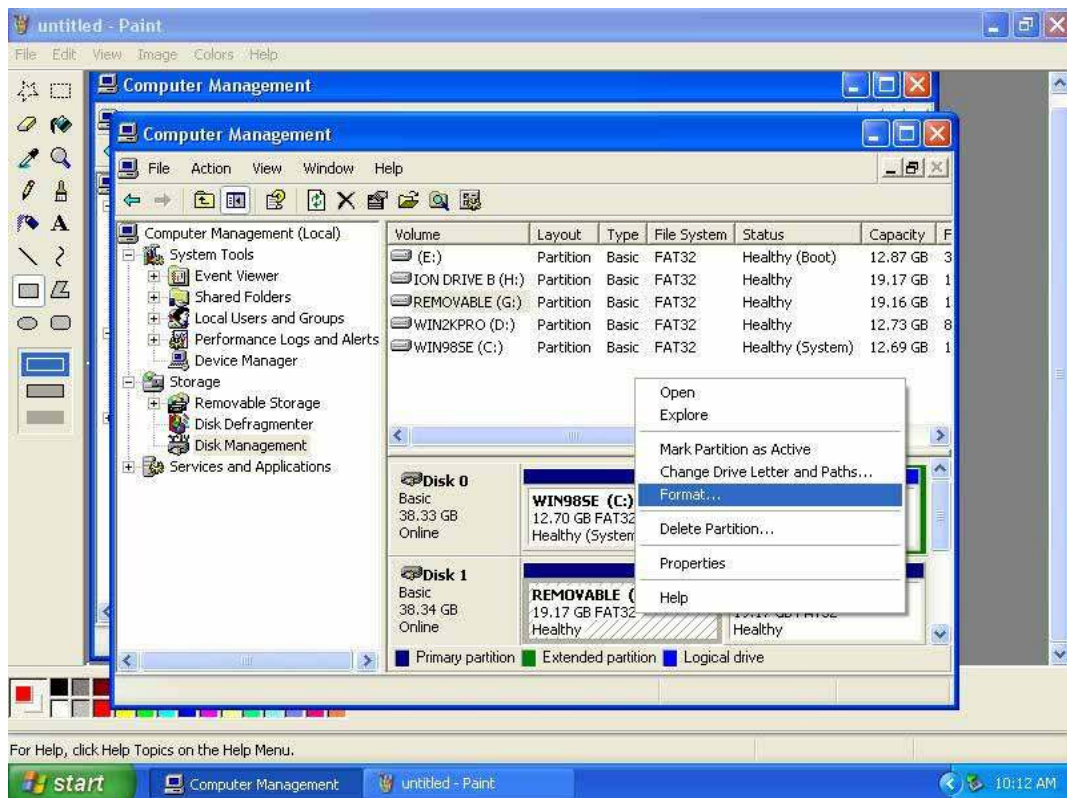


## Win2000 /XP Installation :

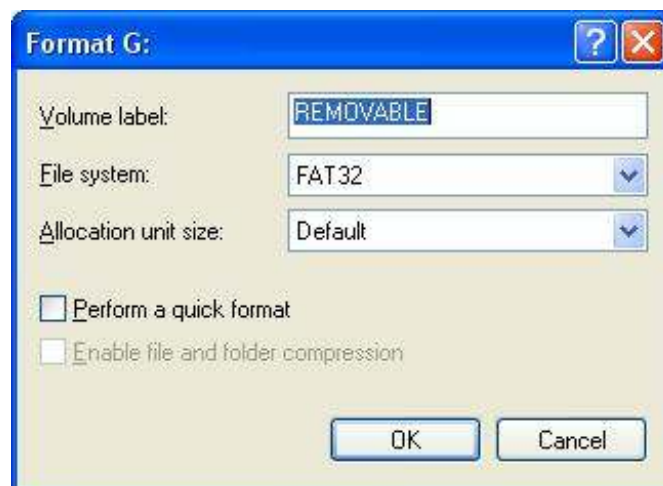
1. Please click “My Computer”and click “Manage”for initial your HDD when you use it first.



2. Please click “Disk Management” and select “Removable Disk” to format your hard drive.



3. Please select “File System” and click “OK”.



4. Please click “OK”.



5. My computer will appear "Removable Disk "as below.

