

AV200+ Multi-Streaming Powerline Adapter With AC Pass Through Starter Kit

TL-PA251KIT

⦿ Features:

- Deliver up to 200Mbps over electrical wires, ideal for HD video streaming
- Integrated power socket to allow additional devices access to power
- Patented Power-Saving Mode automatically reduces power consumption by up to 75%*
- Up to 300 meters range over the household power lines for better performance through walls and across floors
- Mains filter for better powerline communication performance
- No new wires or drilling required, just use existing electrical wires
- No setup required, simply plug and play
- Turns every power socket into a LAN port
- Intelligent channel adaptation maximizes throughput under harsh channel conditions
- 128-bit AES encryption at a easy push of "Pair" Button
- Built-in QoS assures the performance of VoIP/IPTV streaming and on-line gaming
- Supports IGMP managed multicast IP transmission, optimizes IPTV Streaming

*Actual data will vary because of the network conditions and environment factors.



⦿ Description:

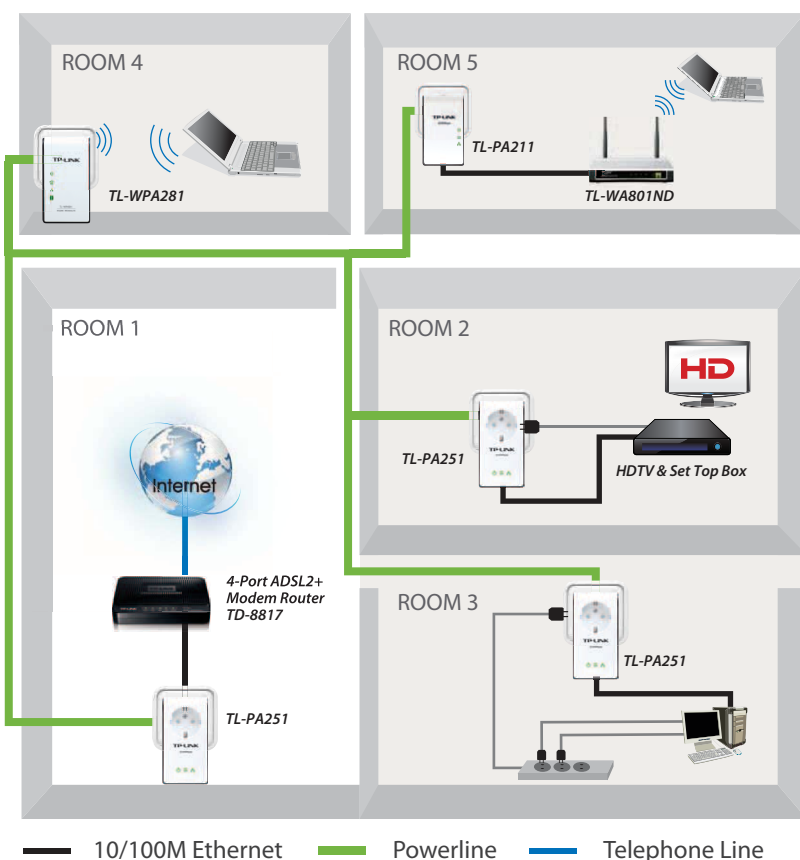
TP-LINK 200Mbps Powerline Adapter TL-PA251KIT turns your existing powerline into a high speed network with no need for new wires or drilling. With its integrated electrical socket and mains filter, TL-PA251KIT provides more convenience and better performance for your home network. The common problem of wasting an electrical outlet is solved and additional terminal devices or multiple sockets can be connected to the adapter just like to a normal wall socket. What's more, the data transmission in the network can be significantly improved by the integrated mains filter. TL-PA251KIT is one of the greatest choices for the establishment of your home network.

⦿ Specifications:

Standards	HomePlug AV, IEEE802.3, IEEE802.3u
Modulation Technology	OFDM
Protocol Support	TCP/IP
Data Rate	200Mbps
Range	300 Meters in house
Support Operating Systems	Windows 98SE/2000/XP/2003/Vista, Windows 7, Mac, Linux*
Interface	Ethernet LAN Port * 1
Encryption	128-bit AES
Integrated Power Socket	√
Power Output	10A Max
Quick Security Setup	√ (Pair Button)
QoS (Quality of Service)	√
Plug Type	EU
LEDs	Power, Powerline, Ethernet
Certifications	CE, RoHS
Dimensions	4.3 x 2.3 x 1.7 in. (110 x 58 x 43 mm)
Operating Temp.	0°C-40°C
Operating Humidity	10%~90%RH, Non-condensing
Power Consumption	3W

*Utility Supports Windows 2000, XP 32/64 bit, Vista 32/64 bit, Windows 7 32/64 bit

⦿ Diagram:



Package

- TL-PA251*2
- RJ-45 Ethernet Cable * 2
- Quick Installation Guide
- Resource CD, including:
Powerline Ethernet Adapter Utility
User Guide
Other relevant contents

Related Products

- For Broadband Access:
TD-8817 Modem Router
- For Local Wireless Extension:
TL-WA801ND Access Point
- For Powerline Network Extension:
TL-PA211, TL-PA251, TL-WPA281