

## AV200 Mini Powerline Adapter Starter Kit

### TL-PA210KIT

#### ⦿ Features:

- Deliver up to 200Mbps speed over electrical wires, ideal for HD video streaming
- Super small design with a brand new exterior
- No new wires, uses existing electrical wires
- Turn every power socket into a LAN port
- Up to 300 meter range over the household power circuits for better performance through walls or across floors
- Easy Plug and Play operation, No configuration required
- Patented Power-Saving Mode automatically reduces power consumption
- Establish a 128-bit AES encryption to secure powerline communications simply by pressing the Pair button on the adapter
- Supports IGMP managed multicast IP transmission, optimizes IPTV streaming
- A wide range of plug types including EU, UK and US ensures that it can be used nearly anywhere



#### ⦿ Description:

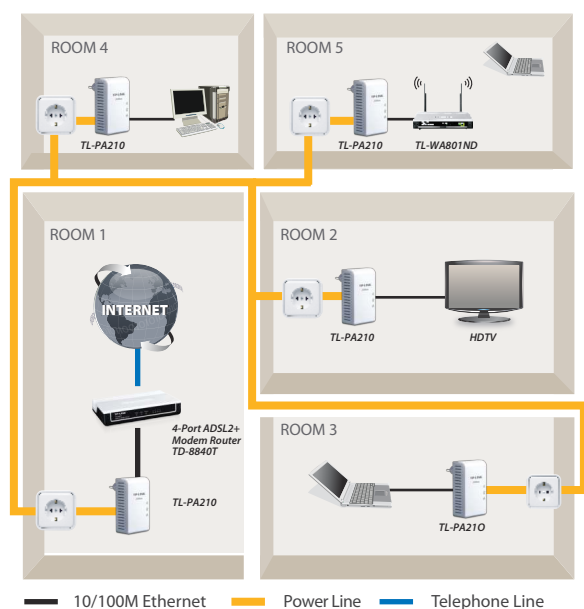
The TP-LINK 200Mbps Mini Powerline Adapter TL-PA210 turns your existing electrical wiring into a high speed network with no need for new wires or drilling. The adapter requires no configuration, simply plug your adapters into your power sockets and you can establish networking infrastructure in a flash. High-speed data transfer rates of up to 200Mbps are far beyond normal 11g wireless speeds. Practical design and sophisticated Power-Saving Mode consumes less power when compared with existing Powerline Adapters. When there is no data transmission or reception over a certain period of time, it will automatically switch from its regular "Working" Mode to "Power-Saving" Mode that will reduce its energy consumption.

## ⦿ Specifications:

Hardware Features	
STANDARDS AND PROTOCOLS	HomePlug AV, IEEE802.3, IEEE802.3u
INTERFACE	10/100Mbps Ethernet Port
PLUG TYPE	EU, US, UK
BUTTON	Pair Button
LED INDICATORS	PWR, PLC, ETH
DIMENSIONS (W x D x H mm)	3.6 x 2.2 x 1.2 in. (93 x 56 x 30 mm)
POWER CONSUMPTION	< 3 W
RANGE	300M in house
Software Features	
MODULATION TECHNOLOGY	OFDM
ENCRYPTION	128-bit AES Encryption
Others	
CERTIFICATION	CE, FCC, RoHS
PACKAGE CONTENTS	Powerline Ethernet Adapter Ethernet cable (RJ45) Quick Installation Guide Resource CD
SYSTEM REQUIREMENTS	Windows 2000/XP/2003/Vista, Windows 7, Mac, Linux
ENVIRONMENT	Operating Temperature: 0°C~40°C (32°F~104°F) Storage Temperature: -40°C~70°C (-40°F~158°F) Operating Humidity: 10%~90% non-condensing Storage Humidity: 5%~90% non-condensing

\* Utility Supports Windows 2000, XP 32/64 bit, Vista 32/64 bit, Windows 7 32/64 bit

## ⦿ Diagram:



### Package/Contents:

- TL-PA210\*2
- RJ-45 Ethernet Cable\*2
- Quick Installation Guide
- Resource CD, including:  
Powerline Ethernet Adapter Utility  
User Guide  
Other relevant contents

### Related Products:

- For Broadband Access:  
TD-8840T Modem Router
- For Local Wireless Extension:  
TL-WA801ND Access Point
- For Powerline Network Extension:  
TL-PA210, TL-PA211, TL-PA251, TL-WPA281