



### Affordable Network Capacity

NETGEAR presents a great way to increase your network's capability without breaking your budget: the 16-port JFS516. This 10/100 Mbps Fast Ethernet switch provides expanded connectivity for small office networks so users no longer have to compete with each other for bandwidth.

All of the essential features – automatic speed and full/half duplex sensing, 200 Mbps throughput per port, Auto Uplink™ – are included, but at an economical price that a value-conscious business owner can't ignore.

#### Thrifty

The ideal, low-cost solution you've been looking for, the unmanaged JFS516 lets you ramp up your office network to a new power level – affordably.

#### Capable

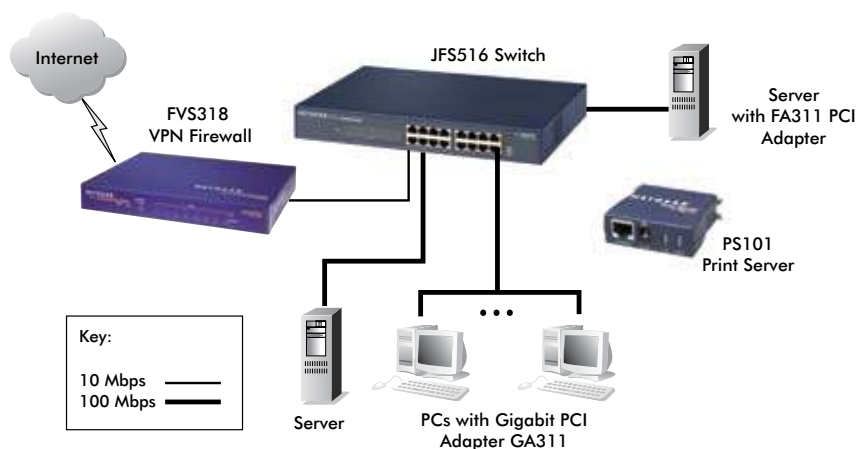
Sixteen switched ports provide private bandwidth for PCs, servers, or hubs, and support 200 Mbps of throughput. Each port delivers 200 Mbps of network speed in full-duplex mode.

#### Perceptive

As soon as it's powered on, it begins operating. Every port automatically senses the proper speed and full/half duplex mode, and Auto Uplink adjusts for straight-through or crossover cables to make the right link.

#### Practical

This high-performance switch makes it easy to combine 10 and 100 Mbps devices within your network. As an added convenience, these sturdy metal units can be mounted in a standard 19-inch rack.



**Technical Specifications****• Network Ports**

- 16 10 or 100 Mbps RJ-45 ports

**• Performance (64 byte packets)**

- Store-and-forward packet switching
- Forward rate (10 Mbps)  
14,800 packet per sec.
- Forward rate (100 Mbps)  
148,000 packet per sec.
- Latency (10 to 100 Mbps) 20 usec max
- MAC addresses 4,000
- Queue buffer KBytes 320
- Mean time between failures (MTBF):  
120,000 hours (~14 years)

**• Physical Specifications**

- Dimensions (h x w x d):  
43 x 320 x 202 mm  
(1.7 x 13 x 8 in)
- Weight: 2.0 kg (4.4 lb)

**• AC Power**

- 15W maximum
- Auto-sensing 100 to 240V, 50/60-Hz
- Localized plug for North America,  
Japan, UK, Europe, Australia

**• Standards Compliance**

- IEEE 802.3i 10BASE-T Ethernet
- IEEE 802.3u 100BASE-TX Fast Ethernet
- Compatible with all major  
network software

**• Status LEDs**

- Unit: Power
- Per network port: 10 or 100 Mbps  
operations, Rx/Tx and collision, link,  
half/full duplex

**• Electromagnetic Emissions**

- CE mark, commercial
- FCC Part 15 Class
- EN 55022 (CISPR 22), Class A
- VCCI Class A
- C-Tick
- MIC

**• Environmental Specifications**

- Operating temperature: 0° to 40° C
- Operating humidity: 80% max. relative  
humidity, non-condensing

**• Safety Agency Approvals**

- UL listed (UL 1950)/CUL

**Warranty**

- NETGEAR Lifetime Warranty†

**ProSupport™ Service Packs  
Available****• OnCall 24x7, Category 1**

- PMB0331-100 (US)
- PMB0331 (non-US)

**• XPressHW, Category 1**

- PRR0331

**Package Contents**

- ProSafe 16-port 10/100 Fast Ethernet  
Switch (JFS516)
- Power cord
- Rack-mount kit
- User guide
- Warranty card
- Support card

**Ordering Information**

- North America: JFS516NA
- Europe - General: JFS516GE
- Europe - UK: JFS516UK
- Asia: JFS516AU
- Japan: JFS516JP

**NETGEAR®**

350 E. Plumeria Drive  
San Jose, CA 95134-1911 USA  
1-888-NETGEAR (638-4327)  
E-mail: [info@NETGEAR.com](mailto:info@NETGEAR.com)  
[www.NETGEAR.com](http://www.NETGEAR.com)

© 2008 NETGEAR, Inc. NETGEAR, the NETGEAR Logo, NETGEAR Digital Entertainer Logo, Connect with Innovation, FrontView, IntelliFi, PowerShift, ProSafe, RAIDar, RAIDiator, X-RAID, RangeMax, ReadyNAS and Smart Wizard are trademarks of NETGEAR, Inc. in the United States and/or other countries. Other brand names mentioned herein are for identification purposes only and may be trademarks of their respective holder(s). Information is subject to change without notice. All rights reserved.

\*Free basic installation support provided for 90 days from date of purchase. Advanced product features and configurations are not included in free basic installation support; optional premium support available.

†Lifetime warranty for product purchased after 05/01/2007. For product purchased before 05/01/2007, warranty is 5 years.

D-JFS516-2